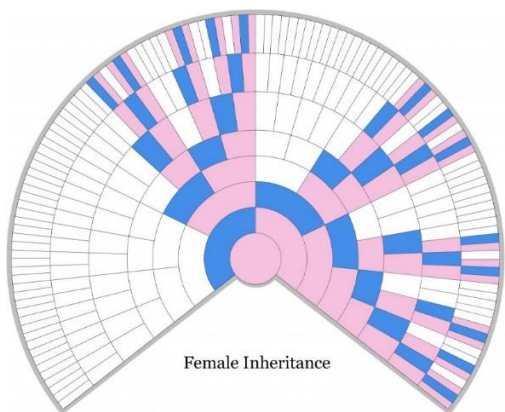
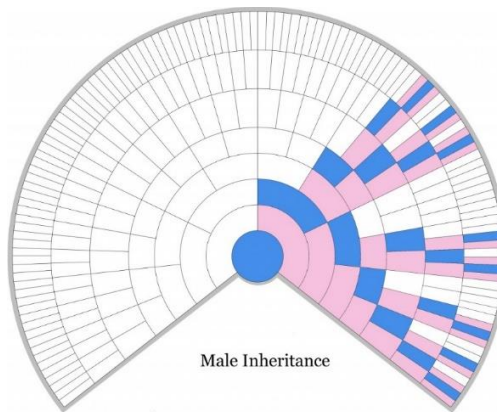


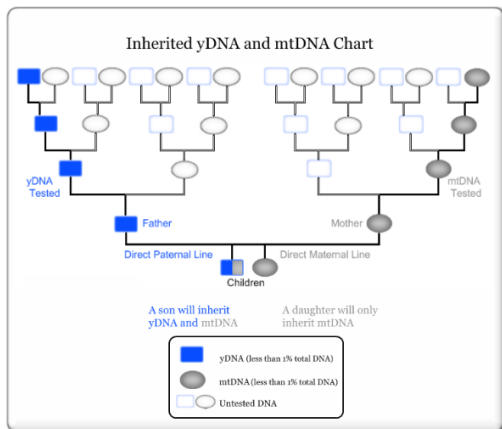
X-Chromosome Inheritance by a Female



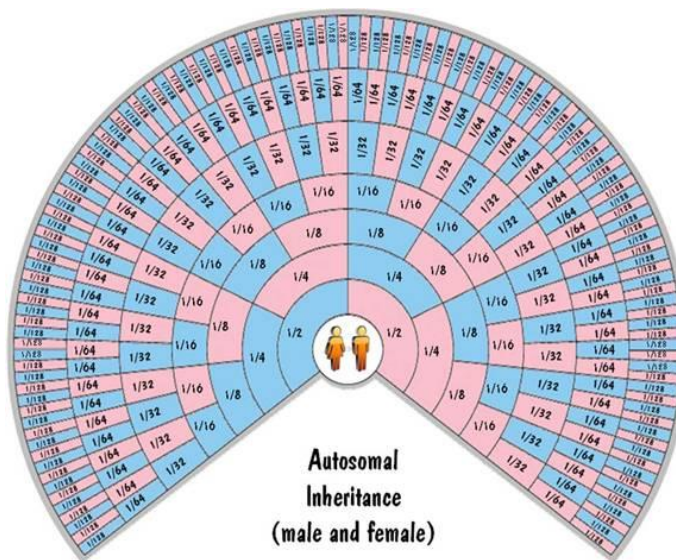
X-Chromosome Inheritance by a Male



Y Chromosome Inheritance and Mitochondrial DNA Inheritance



Autosomal Inheritance by males & females



Shared DNA from Autosomal Testing (Jonny Perl Interactive Chart: <https://dnainter.com/tools/sharedcmv4>)

**The Shared cM Project – Version 3.0** For MUCH more information (including histograms and company breakdowns) see: [goo.gl/Z1EcJQ](https://goo.gl/Z1EcJQ)  
 August 2017  
 Blaine T. Bettinger  
 www.TheGeneticGenealogist.com  
 CC 4.0 Attribution License

**How to read this chart:**  
 Relationship: Aunt/Uncle  
 Average: 1750  
 Range (low-high) (99th Percentile): 1349 - 2175

Half GG-Aunt/Uncle 187 12 - 383	Great-Grandparent 881 464 - 1486										Great-Great-Aunt/Uncle 427 191 - 885	GGGG-Aunt/Uncle	Other Relationships
Half Great-Aunt/Uncle 432 125 - 765	Grandparent 1766 1156 - 2311					Great Aunt/Uncle 914 251 - 2108	Great-Great-Grandparent	GGG-Aunt/Uncle				6C 21 0 - 86	
Half Aunt/Uncle 891 500 - 1446	Parent 3487 3330 - 3720		Aunt/Uncle 1750 1349 - 2175									6C1R 16 0 - 72	
Half 3c 61 0 - 178	Half 2c 117 9 - 397	Half 1c 457 137 - 856	Half-Sibling 1783 1317 - 2312	Sibling 2629 2209 - 3384	SELF	1c 874 553 - 1225	2c 233 46 - 515	3c 74 0 - 217	4c 35 0 - 127	5c 25 0 - 94	6C2R 17 0 - 75		
Half 3c1R 42 0 - 165	Half 2c1R 73 0 - 341	Half 1c1R 226 57 - 530	Half Niece/Nephew 891 500 - 1446	Niece/Nephew 1750 1349 - 2175	Child 3487 3330 - 3720	1c1R 439 141 - 851	2c1R 123 0 - 316	3c1R 48 0 - 173	4c1R 28 0 - 117	5c1R 21 0 - 79	7C 13 0 - 57		
Half 3c2R 34 0 - 96	Half 2c2R 61 0 - 353	Half 1c2R 145 37 - 360	Half Great Niece/Nephew 432 125 - 765	Great-Niece/Nephew 910 251 - 2108	Grandchild 1766 1156 - 2311	1c2R 229 43 - 531	2c2R 74 0 - 261	3c2R 35 0 - 116	4c2R 22 0 - 109	5c2R 17 0 - 43	7C1R 13 0 - 53		
Half 3c3R 34 0 - 191	Half 2c3R 87 0 - 191	Half 1c3R 87 12 - 383	Half GG Niece/Nephew 187 12 - 383	Great-Great-Niece/Nephew 427 191 - 885	Great-Grandchild 881 464 - 1486	1c3R 123 0 - 283	2c3R 57 0 - 139	3c3R 22 0 - 69	4c3R 29 0 - 82	5c3R 11 0 - 44	8C 12 0 - 50		

Minimum was automatically set to 0 cM for relationships more distant than Half 2C, and averages were determined only for submissions in which DNA was shared